
School Quality Survey

Statewide Summary

Spring 2011

Department of Education
Systems Accountability Office
System Evaluation and Reporting Section

Publication Date: June 2011

Group	# Distributed	# Returned	Return rate (%)
Teachers:	10,632	7,190	67.6%

Teachers by Type of School

<i>Elementary</i>	5,266	3,721	70.7%
<i>Elementary - Middle</i>	170	87	51.2%
<i>Elementary - Middle - High</i>	214	131	61.2%
<i>Middle</i>	1,774	1,154	65.1%
<i>Middle - High</i>	371	180	48.5%
<i>High</i>	2,837	1,917	67.6%

Parents:	75,585	20,477	27.1%
-----------------	--------	--------	-------

Parents by Type of School

<i>Elementary</i>	25,953	10,126	39.0%
<i>Elementary - Middle</i>	1,030	302	29.3%
<i>Elementary - Middle - High</i>	1,274	293	23.0%
<i>Middle</i>	21,136	5,422	25.7%
<i>Middle - High</i>	2,763	357	12.9%
<i>High</i>	23,429	3,977	17.0%

Students:	75,767	64,971	85.8%
------------------	--------	--------	-------

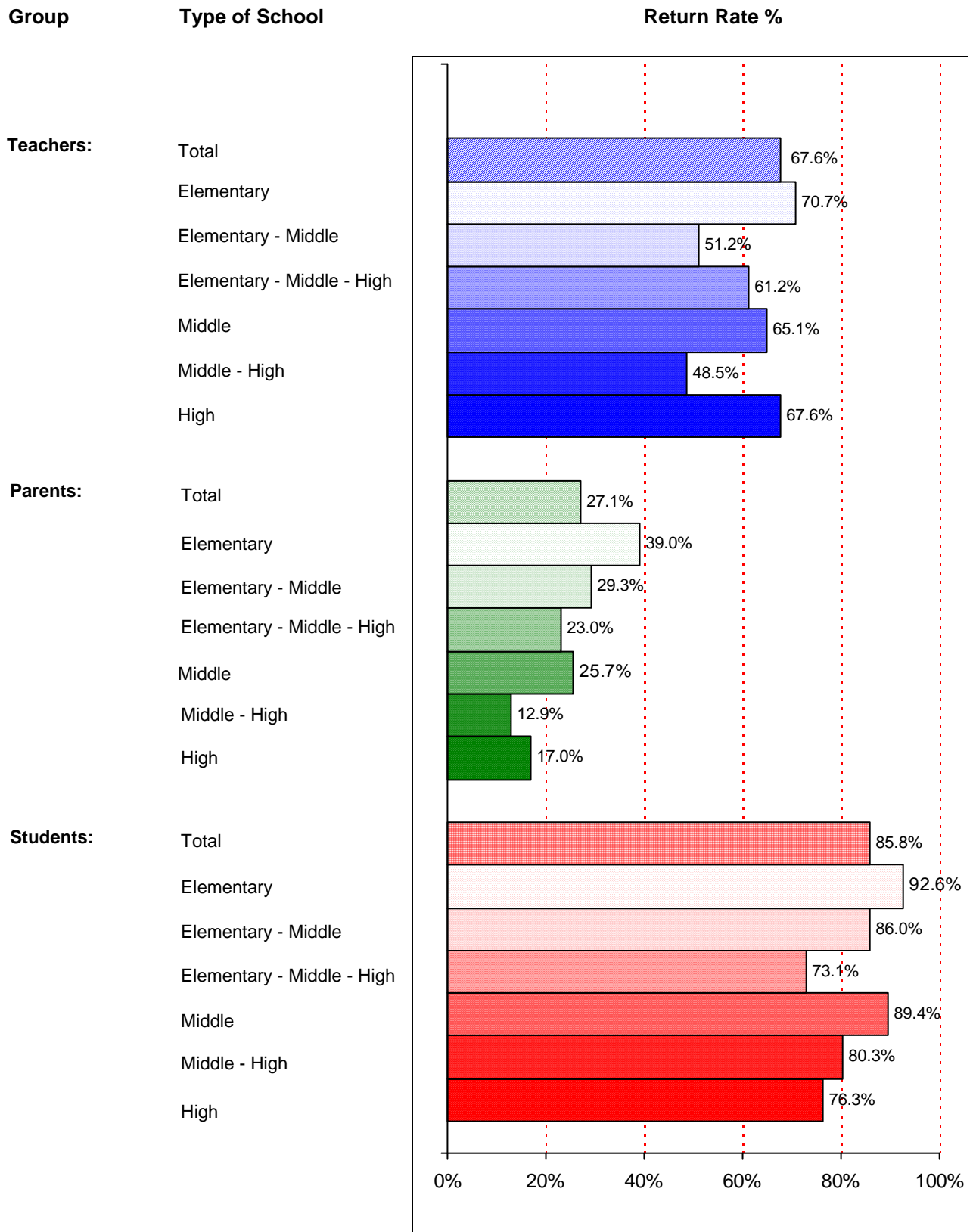
Students by Type of School

<i>Elementary</i>	25,971	24,040	92.6%
<i>Elementary - Middle</i>	1,035	890	86.0%
<i>Elementary - Middle - High</i>	1,477	1,079	73.1%
<i>Middle</i>	21,138	18,896	89.4%
<i>Middle - High</i>	2,716	2,180	80.3%
<i>High</i>	23,430	17,886	76.3%

Administrative and Instructional Support Staff:	5,116	3,144	61.5%
--	-------	-------	-------

Staff by Type of School

<i>Elementary</i>	2,781	1,758	63.2%
<i>Elementary - Middle</i>	59	37	62.7%
<i>Elementary - Middle - High</i>	132	83	62.9%
<i>Middle</i>	802	510	63.6%
<i>Middle - High</i>	200	85	42.5%
<i>High</i>	1,142	671	58.8%

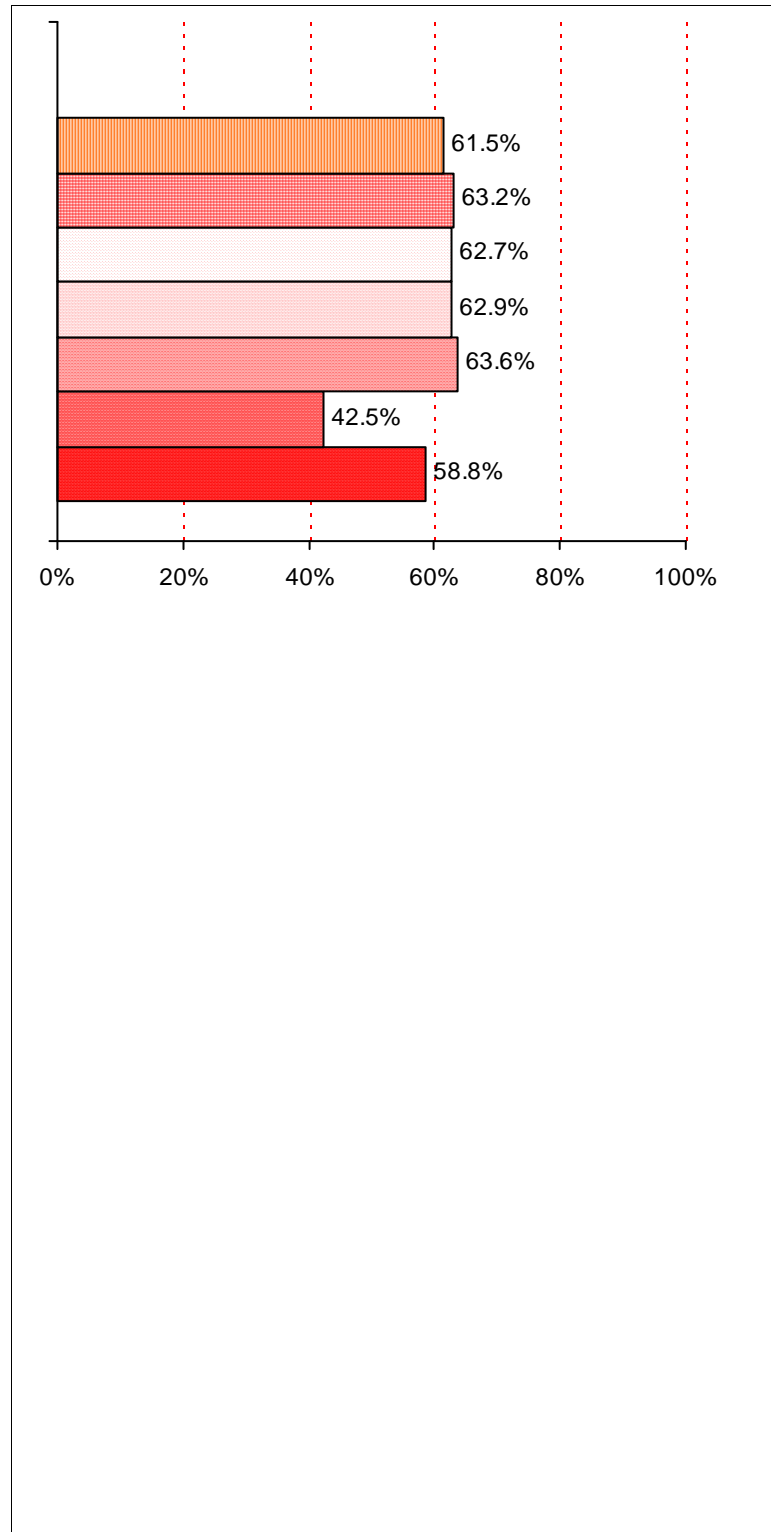


Group

Type of School

**Administrative
Office Staff and
Instructional
Support Staff:**

Total
Elementary
Elementary - Middle
Elementary - Middle - High
Middle
Middle - High
High

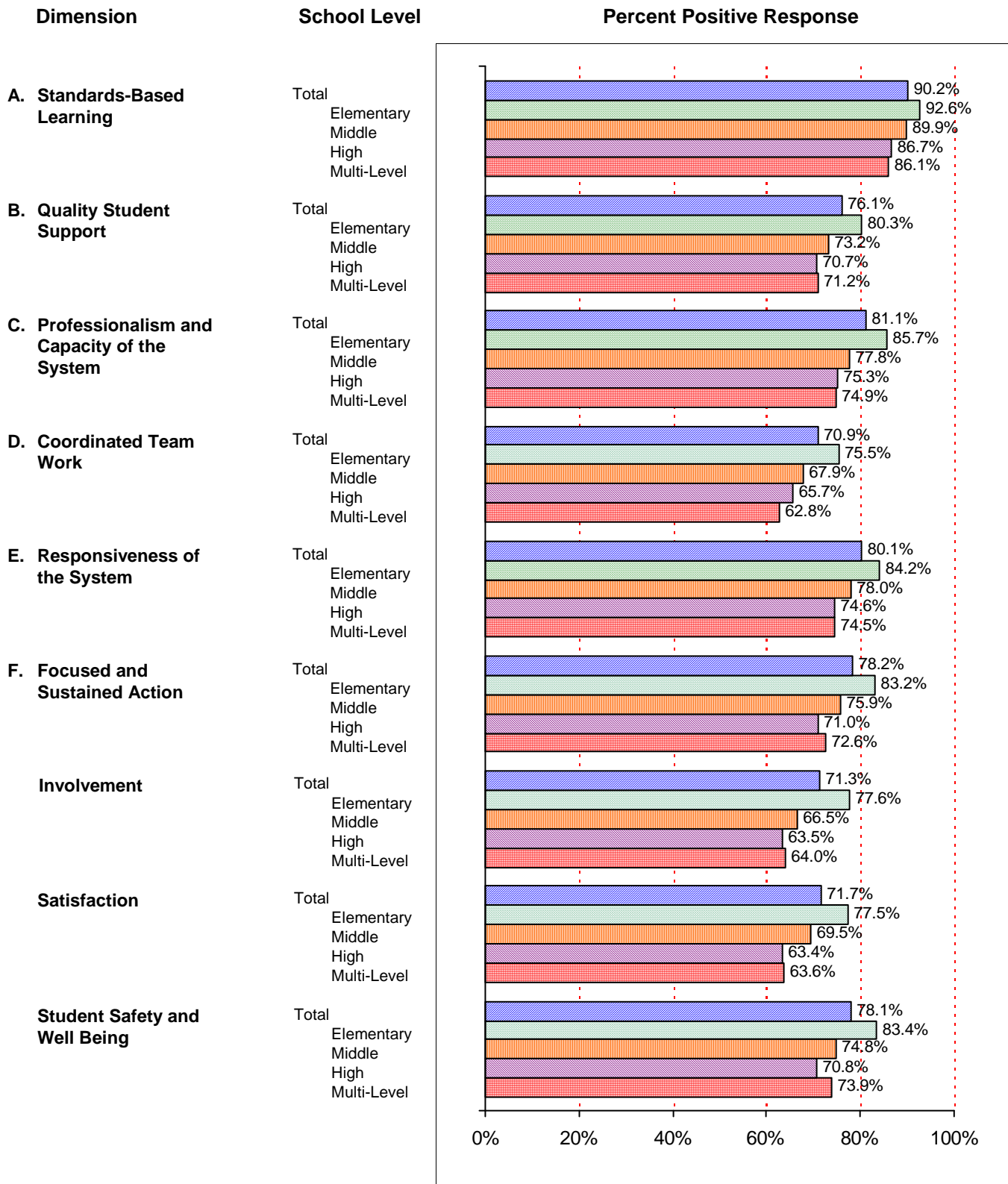


SQS State Summary Table: Teachers

School Quality Survey

Percent (%) Response

Dimension	School Level	Average	Positive	Neutral	Negative	Don't Know
A. Standards-Based Learning	Total	4.3	90.2%	7.3%	2.3%	0.2%
	Elementary	4.4	92.6%	5.8%	1.5%	0.1%
	Middle	4.3	89.9%	7.7%	2.2%	0.1%
	High	4.2	86.7%	9.4%	3.6%	0.3%
	Multi-Level	4.2	86.1%	10.2%	3.4%	0.3%
B. Quality Student Support	Total	3.9	76.1%	12.6%	10.7%	0.6%
	Elementary	3.9	80.3%	10.8%	8.4%	0.5%
	Middle	3.8	73.2%	14.1%	12.2%	0.5%
	High	3.8	70.7%	15.0%	13.4%	0.9%
	Multi-Level	3.8	71.2%	14.1%	13.9%	0.9%
C. Professionalism and Capacity of the System	Total	4.0	81.1%	11.8%	6.2%	0.9%
	Elementary	4.2	85.7%	9.3%	4.3%	0.7%
	Middle	4.0	77.8%	13.6%	7.8%	0.8%
	High	3.9	75.3%	14.9%	8.7%	1.2%
	Multi-Level	3.9	74.9%	15.7%	8.4%	0.9%
D. Coordinated Team Work	Total	3.8	70.9%	14.4%	13.8%	0.8%
	Elementary	3.9	75.5%	12.7%	11.3%	0.6%
	Middle	3.7	67.9%	15.6%	15.7%	0.8%
	High	3.6	65.7%	16.4%	16.6%	1.3%
	Multi-Level	3.6	62.8%	17.8%	18.2%	1.2%
E. Responsiveness of the System	Total	4.1	80.1%	12.4%	6.1%	1.5%
	Elementary	4.2	84.2%	9.8%	4.8%	1.2%
	Middle	4.0	78.0%	13.9%	6.9%	1.3%
	High	3.9	74.6%	15.7%	7.7%	2.0%
	Multi-Level	3.9	74.5%	16.0%	7.5%	1.9%
F. Focused and Sustained Action	Total	4.0	78.2%	13.0%	7.7%	1.1%
	Elementary	4.2	83.2%	10.3%	5.6%	0.9%
	Middle	3.9	75.9%	14.3%	8.7%	1.0%
	High	3.8	71.0%	16.9%	10.7%	1.4%
	Multi-Level	3.9	72.6%	16.0%	10.3%	1.0%
Involvement	Total	3.9	71.3%	16.3%	10.8%	1.6%
	Elementary	4.0	77.6%	13.5%	7.7%	1.2%
	Middle	3.7	66.5%	18.5%	13.5%	1.5%
	High	3.7	63.5%	19.7%	14.5%	2.4%
	Multi-Level	3.7	64.0%	19.4%	14.0%	2.5%
Satisfaction	Total	3.8	71.7%	16.0%	12.1%	0.3%
	Elementary	3.9	77.5%	13.1%	9.2%	0.2%
	Middle	3.7	69.5%	17.6%	12.7%	0.2%
	High	3.6	63.4%	19.9%	16.4%	0.4%
	Multi-Level	3.6	63.6%	20.0%	15.9%	0.5%
Student Safety and Well Being	Total	4.0	78.1%	11.4%	9.8%	0.8%
	Elementary	4.1	83.4%	9.2%	6.9%	0.6%
	Middle	3.9	74.8%	12.8%	11.9%	0.5%
	High	3.8	70.8%	14.5%	13.5%	1.2%
	Multi-Level	3.9	73.9%	12.5%	12.7%	0.9%

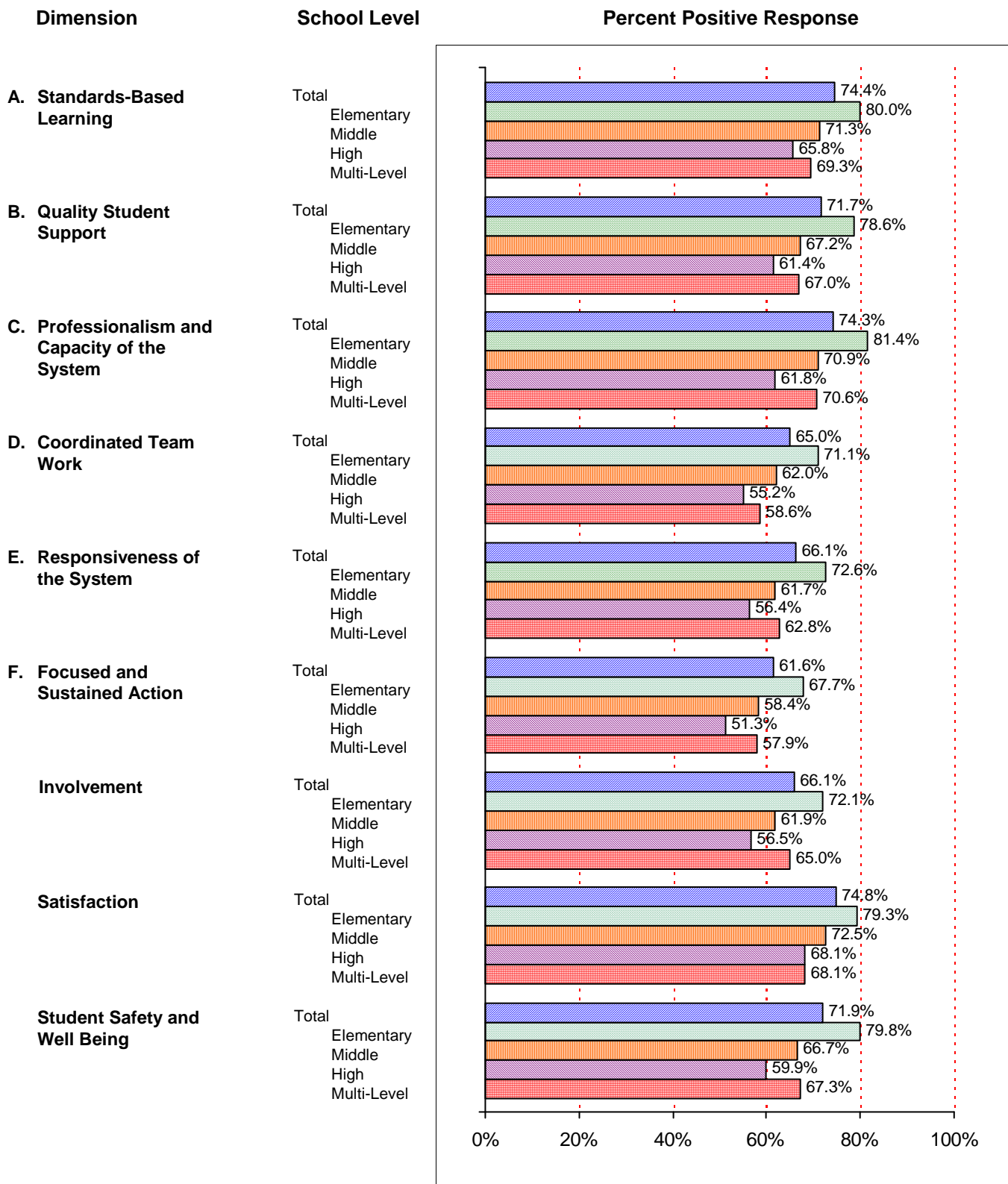


SQS State Summary Table: Parents

School Quality Survey

Percent (%) Response

Dimension	School Level	Average	Positive	Neutral	Negative	Don't Know
A. Standards-Based Learning	Total	4.0	74.4%	15.4%	7.1%	3.0%
	Elementary	4.1	80.0%	12.7%	4.9%	2.4%
	Middle	3.9	71.3%	17.1%	8.2%	3.3%
	High	3.8	65.8%	19.8%	10.3%	4.2%
	Multi-Level	3.8	69.3%	16.4%	10.9%	3.4%
B. Quality Student Support	Total	3.9	71.7%	16.3%	7.3%	4.6%
	Elementary	4.1	78.6%	12.7%	5.1%	3.5%
	Middle	3.8	67.2%	18.9%	8.5%	5.4%
	High	3.7	61.4%	21.6%	10.6%	6.5%
	Multi-Level	3.8	67.0%	17.6%	11.0%	4.4%
C. Professionalism and Capacity of the System	Total	4.0	74.3%	17.4%	5.8%	2.5%
	Elementary	4.1	81.4%	13.0%	3.9%	1.7%
	Middle	3.9	70.9%	19.1%	6.7%	3.2%
	High	3.7	61.8%	26.2%	8.4%	3.6%
	Multi-Level	3.8	70.6%	17.1%	10.4%	1.9%
D. Coordinated Team Work	Total	3.8	65.0%	17.9%	9.8%	7.2%
	Elementary	3.9	71.1%	15.3%	7.7%	5.9%
	Middle	3.7	62.0%	19.7%	10.2%	8.2%
	High	3.6	55.2%	21.9%	13.5%	9.5%
	Multi-Level	3.6	58.6%	18.8%	15.7%	6.9%
E. Responsiveness of the System	Total	3.8	66.1%	21.1%	8.7%	4.1%
	Elementary	4.0	72.6%	18.1%	6.3%	3.1%
	Middle	3.7	61.7%	23.5%	10.3%	4.6%
	High	3.6	56.4%	25.5%	12.4%	5.7%
	Multi-Level	3.7	62.8%	22.0%	11.3%	3.9%
F. Focused and Sustained Action	Total	3.8	61.6%	22.1%	9.2%	7.1%
	Elementary	3.9	67.7%	19.6%	6.8%	5.8%
	Middle	3.7	58.4%	23.4%	10.3%	7.9%
	High	3.5	51.3%	26.4%	13.0%	9.3%
	Multi-Level	3.7	57.9%	22.5%	12.4%	7.2%
Involvement	Total	3.8	66.1%	21.5%	10.2%	2.2%
	Elementary	4.0	72.1%	18.8%	7.4%	1.7%
	Middle	3.7	61.9%	23.5%	12.0%	2.5%
	High	3.6	56.5%	25.6%	14.6%	3.3%
	Multi-Level	3.8	65.0%	21.5%	11.3%	2.2%
Satisfaction	Total	3.9	74.8%	15.9%	8.7%	0.7%
	Elementary	4.1	79.3%	13.6%	6.6%	0.5%
	Middle	3.9	72.5%	17.3%	9.3%	0.8%
	High	3.8	68.1%	19.4%	11.6%	0.9%
	Multi-Level	3.8	68.1%	16.9%	14.6%	0.4%
Student Safety and Well Being	Total	3.9	71.9%	16.3%	7.6%	4.3%
	Elementary	4.1	79.8%	12.3%	4.8%	3.1%
	Middle	3.8	66.7%	19.2%	9.2%	4.9%
	High	3.6	59.9%	22.3%	11.6%	6.2%
	Multi-Level	3.8	67.3%	17.7%	10.9%	4.1%

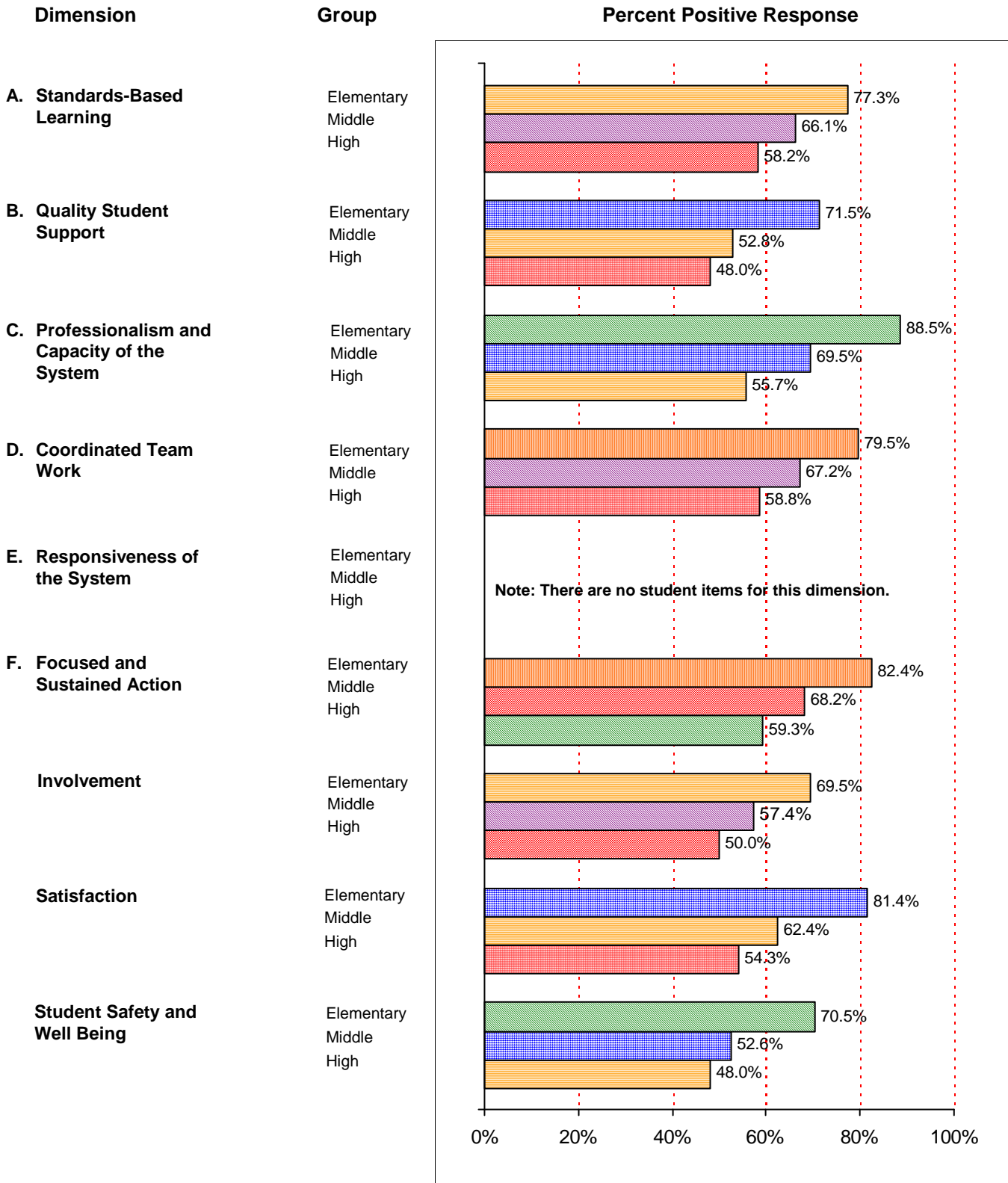


SQS State Summary Table: Students

School Quality Survey

Percent (%) Response

Dimension	Group	Average	Positive	Neutral	Negative	Don't Know
A. Standards-Based Learning	Elementary	4.2	77.3%	13.2%	4.2%	5.3%
	Middle	3.9	66.1%	22.8%	6.8%	4.2%
	High	3.6	58.2%	29.4%	9.4%	3.0%
B. Quality Student Support	Elementary	4.1	71.5%	14.8%	9.3%	4.5%
	Middle	3.5	52.8%	25.8%	16.5%	4.8%
	High	3.4	48.0%	30.6%	17.1%	4.3%
C. Professionalism and Capacity of the System	Elementary	4.5	88.5%	6.8%	2.1%	2.5%
	Middle	3.9	69.5%	20.3%	6.3%	3.9%
	High	3.6	55.7%	31.3%	10.1%	3.0%
D. Coordinated Team Work	Elementary	4.3	79.5%	10.7%	5.9%	3.9%
	Middle	3.9	67.2%	19.7%	9.0%	4.1%
	High	3.6	58.8%	25.3%	12.3%	3.6%
E. Responsiveness of the System	Elementary Middle High	Note: There are no student items for this dimension.				
F. Focused and Sustained Action	Elementary	4.4	82.4%	8.5%	3.3%	5.9%
	Middle	4.0	68.2%	18.7%	6.6%	6.5%
	High	3.7	59.3%	24.9%	9.4%	6.4%
Involvement	Elementary	4.0	69.5%	16.7%	10.0%	3.8%
	Middle	3.6	57.4%	24.4%	14.3%	3.9%
	High	3.4	50.0%	28.1%	19.0%	2.9%
Satisfaction	Elementary	4.3	81.4%	11.1%	5.0%	2.6%
	Middle	3.8	62.4%	23.6%	10.6%	3.4%
	High	3.5	54.3%	30.0%	13.2%	2.5%
Student Safety and Well Being	Elementary	4.0	70.5%	15.1%	9.7%	4.7%
	Middle	3.5	52.6%	25.7%	16.5%	5.2%
	High	3.4	48.0%	30.5%	16.6%	4.9%

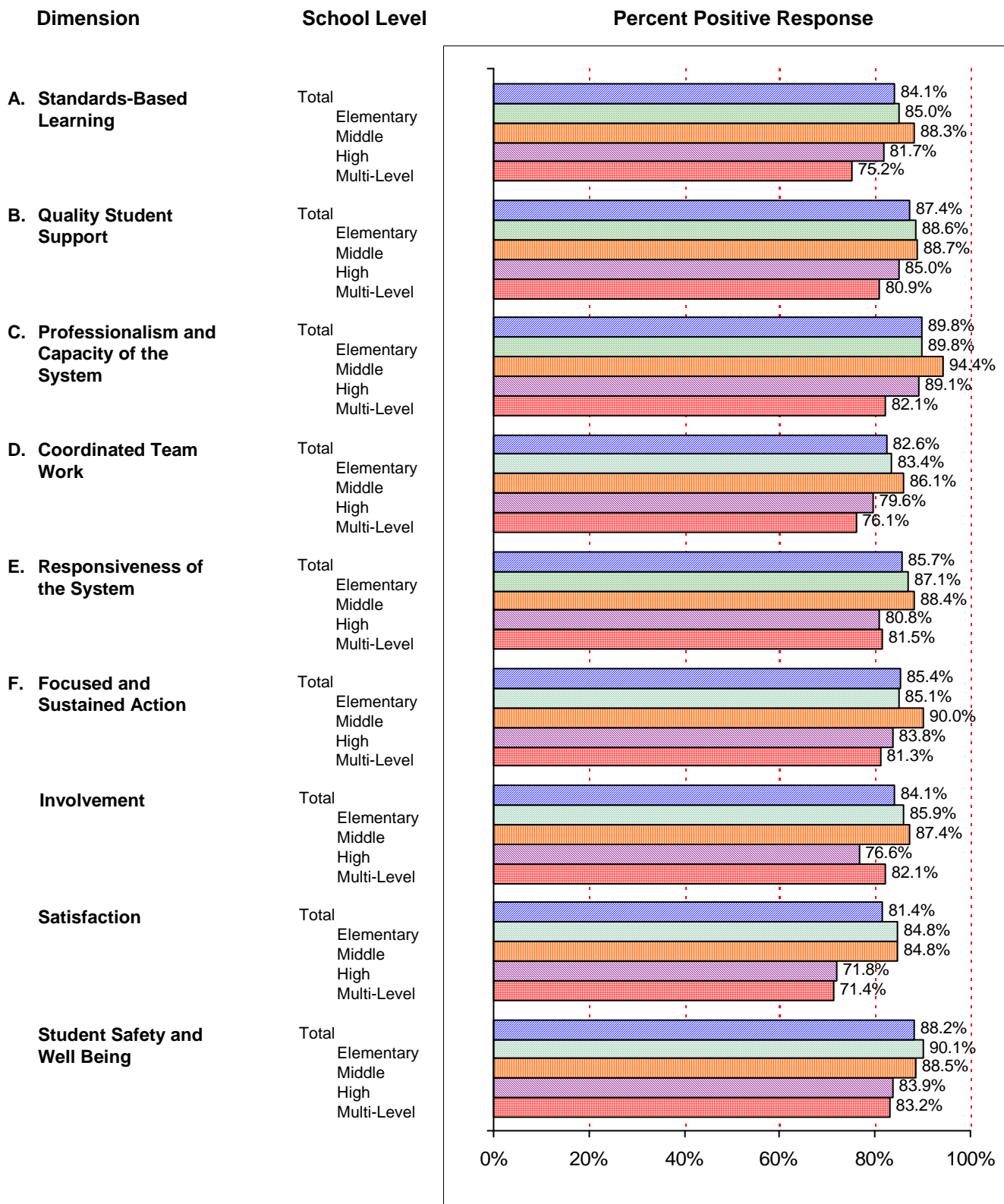


SQS State Summary Table: Administrative Office Staff

School Quality Survey

Percent (%) Response

Dimension	School Level	Average	Positive	Neutral	Negative	Don't Know	NA*
A. Standards-Based Learning	Total	4.2	84.1%	8.3%	2.7%	4.0%	0.9%
	Elementary	4.3	85.0%	7.1%	1.8%	4.8%	1.2%
	Middle	4.2	88.3%	6.5%	2.2%	2.5%	0.4%
	High	4.1	81.7%	10.8%	3.9%	3.1%	0.5%
	Multi-Level	3.9	75.2%	14.3%	7.2%	2.8%	0.5%
B. Quality Student Support	Total	4.2	87.4%	7.4%	4.5%	0.5%	0.2%
	Elementary	4.3	88.6%	6.8%	3.6%	0.7%	0.3%
	Middle	4.2	88.7%	5.8%	5.2%	0.2%	0.1%
	High	4.1	85.0%	8.4%	5.9%	0.5%	0.2%
	Multi-Level	4.0	80.9%	12.3%	6.6%	0.1%	0.1%
C. Professionalism and Capacity of the System	Total	4.3	89.8%	6.2%	1.9%	1.6%	0.5%
	Elementary	4.4	89.8%	5.6%	1.9%	2.1%	0.6%
	Middle	4.4	94.4%	3.2%	1.0%	0.6%	0.8%
	High	4.3	89.1%	7.2%	2.2%	1.4%	0.1%
	Multi-Level	4.1	82.1%	14.4%	2.9%	0.3%	0.3%
D. Coordinated Team Work	Total	4.1	82.6%	9.1%	6.8%	1.3%	0.2%
	Elementary	4.2	83.4%	9.1%	5.5%	1.8%	0.3%
	Middle	4.2	86.1%	7.1%	6.5%	0.2%	0.1%
	High	4.0	79.6%	10.4%	9.2%	0.8%	0.1%
	Multi-Level	3.9	76.1%	10.7%	12.2%	0.8%	0.2%
E. Responsiveness of the System	Total	4.2	85.7%	9.2%	3.8%	1.2%	0.1%
	Elementary	4.3	87.1%	8.7%	2.8%	1.3%	0.1%
	Middle	4.2	88.4%	8.0%	3.1%	0.5%	0.0%
	High	4.0	80.8%	11.0%	6.7%	1.5%	0.0%
	Multi-Level	4.0	81.5%	11.7%	5.3%	1.3%	0.2%
F. Focused and Sustained Action	Total	4.2	85.4%	8.2%	3.3%	2.4%	0.7%
	Elementary	4.3	85.1%	8.2%	2.6%	3.1%	1.0%
	Middle	4.3	90.0%	6.0%	2.6%	1.1%	0.4%
	High	4.1	83.8%	9.1%	5.1%	1.8%	0.2%
	Multi-Level	4.1	81.3%	11.5%	5.9%	0.9%	0.4%
Involvement	Total	4.1	84.1%	11.1%	3.5%	1.3%	0.0%
	Elementary	4.2	85.9%	10.4%	2.2%	1.5%	0.1%
	Middle	4.2	87.4%	9.2%	3.0%	0.4%	0.0%
	High	3.9	76.6%	14.4%	7.6%	1.5%	0.0%
	Multi-Level	4.0	82.1%	12.4%	4.3%	1.3%	0.0%
Satisfaction	Total	4.1	81.4%	11.4%	6.0%	0.9%	0.3%
	Elementary	4.2	84.8%	9.6%	4.3%	1.1%	0.2%
	Middle	4.1	84.8%	8.5%	6.0%	0.4%	0.2%
	High	3.8	71.8%	17.3%	9.2%	1.3%	0.4%
	Multi-Level	3.7	71.4%	16.2%	12.0%	0.0%	0.4%
Student Safety and Well Being	Total	4.3	88.2%	6.7%	4.1%	0.6%	0.3%
	Elementary	4.3	90.1%	5.9%	2.9%	0.7%	0.4%
	Middle	4.2	88.5%	4.9%	6.1%	0.2%	0.3%
	High	4.1	83.9%	8.8%	6.1%	0.8%	0.4%
	Multi-Level	4.1	83.2%	11.4%	5.3%	0.0%	0.2%



SQS State Summary Table: Instructional Support Staff

School Quality Survey

Percent (%) Response

Dimension	School Level	Average	Positive	Neutral	Negative	Don't Know	NA*
A. Standards-Based Learning	Total	4.1	80.4%	12.9%	4.3%	2.1%	0.3%
	Elementary	4.2	85.6%	9.2%	3.3%	1.7%	0.1%
	Middle	4.0	80.1%	14.1%	4.2%	1.4%	0.2%
	High	3.8	71.0%	19.2%	6.2%	3.2%	0.5%
	Multi-Level	3.8	70.3%	18.8%	7.1%	2.8%	1.0%
B. Quality Student Support	Total	4.0	77.9%	13.2%	8.1%	0.7%	0.2%
	Elementary	4.1	82.0%	10.7%	6.5%	0.7%	0.1%
	Middle	3.9	74.7%	15.4%	9.4%	0.4%	0.1%
	High	3.8	71.9%	16.4%	10.4%	1.1%	0.1%
	Multi-Level	3.8	71.6%	17.1%	9.6%	0.8%	0.9%
C. Professionalism and Capacity of the System	Total	4.1	81.4%	12.7%	4.3%	1.3%	0.4%
	Elementary	4.2	86.4%	9.0%	3.2%	1.1%	0.3%
	Middle	4.0	79.9%	13.8%	5.0%	0.9%	0.4%
	High	3.9	72.4%	19.4%	6.1%	1.9%	0.3%
	Multi-Level	4.0	76.0%	16.5%	5.2%	1.4%	1.0%
D. Coordinated Team Work	Total	3.9	71.9%	15.8%	10.4%	1.5%	0.4%
	Elementary	4.0	76.2%	13.2%	9.0%	1.2%	0.3%
	Middle	3.9	70.6%	17.6%	10.1%	1.3%	0.3%
	High	3.7	64.2%	20.1%	13.0%	2.3%	0.4%
	Multi-Level	3.7	65.2%	18.3%	14.1%	1.1%	1.4%
E. Responsiveness of the System	Total	4.0	75.2%	15.7%	5.6%	3.2%	0.4%
	Elementary	4.1	81.0%	11.7%	4.5%	2.5%	0.3%
	Middle	3.9	73.5%	17.9%	5.9%	2.4%	0.3%
	High	3.7	64.5%	22.5%	7.5%	5.2%	0.3%
	Multi-Level	3.8	68.3%	19.0%	7.1%	3.4%	2.2%
F. Focused and Sustained Action	Total	4.0	77.1%	14.6%	4.9%	2.7%	0.7%
	Elementary	4.2	82.4%	10.8%	3.9%	2.3%	0.7%
	Middle	4.0	76.6%	16.2%	4.1%	2.2%	0.9%
	High	3.8	67.2%	21.6%	6.8%	3.8%	0.6%
	Multi-Level	3.8	68.6%	18.1%	7.8%	4.2%	1.2%
Involvement	Total	4.0	77.8%	14.9%	4.7%	2.3%	0.4%
	Elementary	4.1	83.3%	11.1%	4.2%	1.3%	0.1%
	Middle	4.0	77.6%	16.6%	4.5%	1.2%	0.1%
	High	3.8	66.6%	21.9%	5.9%	5.3%	0.3%
	Multi-Level	3.9	72.8%	17.5%	4.8%	1.9%	3.2%
Satisfaction	Total	3.8	68.9%	19.8%	10.4%	0.8%	0.1%
	Elementary	4.0	76.3%	14.8%	8.0%	0.8%	0.1%
	Middle	3.7	65.6%	23.1%	10.9%	0.4%	0.0%
	High	3.5	56.1%	27.7%	15.1%	1.1%	0.0%
	Multi-Level	3.6	61.1%	25.1%	12.4%	0.5%	0.8%
Student Safety and Well Being	Total	4.0	79.6%	11.5%	7.5%	1.1%	0.3%
	Elementary	4.2	84.9%	8.8%	5.1%	1.0%	0.2%
	Middle	3.9	75.8%	13.0%	10.5%	0.6%	0.1%
	High	3.8	72.1%	15.8%	10.4%	1.5%	0.3%
	Multi-Level	3.9	72.0%	15.4%	10.2%	1.5%	0.9%

