



Paauilo Elementary & Intermediate School

School Code: 382

Grades K-9

School Status and Improvement Report School Year 2015-16



Contents

Focus on Standards	p. 1
School Description	p. 1
School Setting	pp. 2-3
<ul style="list-style-type: none"> • Student Profile • Community Profile 	
School Improvement	p. 4
<ul style="list-style-type: none"> • Summary of Progress 	
School Resources	p. 5
<ul style="list-style-type: none"> • Certified Staff • Facilities 	
Vital Signs	pp. 6-8
<ul style="list-style-type: none"> • School Quality Survey • Student Conduct • School Retention or Completion • Hawaii Statewide Assessment Program • Other School Information 	

School Address:

Paauilo Elementary & Intermediate School
 43-1497 Hauola Rd
 Paauilo, Hawaii 96776

Focus On Standards

This School Status and Improvement Report has been prepared as part of the Department's education accountability system to provide regular, understandable accounts of our schools' performance and progress, as required by §302A-1004, Hawai'i Revised Statutes.

This report describes the school and its setting; provides information about the school's administrators, teachers, students and facilities; summarizes progress made based on the school's improvement plan; and reports student achievement results along with other vital signs.

School Description

Pa'auilo Elementary and Intermediate School (PEIS) is the only kindergarten through ninth grade public school in the state of Hawaii. It is situated in a rural setting on the *Hamakua* Coast of the Island of Hawai'i and has an enrollment of about 213 students. Pa'auilo has received full accreditation from the Western Association of Schools and Colleges (WASC) through 2022.

PEIS is a Title I school and has always celebrated its diversity of student population and course offerings. In the 2015-16 school year, we were able to offer Economics, PE/Health, STEM Gardening and Technology in addition to the standard array of subject offerings. In the upcoming 2016-17 school year, the school will be adding several elective courses for middle school students that will include Spanish, AVID elective, 2D/3D Art, Ukulele, Yearbook with photography, graphic design, digital art and web design. We also hope to offer culinary arts in the second semester. Pa'auilo will continue to implement the Success For All (SFA) framework using the Wonders textbooks. SFA is a researched-based reading reform model that supports the school academically and structurally in grades K-5.

Our school addresses 21st-century skills and the Common Core State Standards to include innovation, critical thinking, reading and writing, global citizenship, sustainability, and STEM curriculum. We empower our students with the ability to discover, inspire, and be innovative in order for them to be competitive in the global society. Students who attend Pa'auilo operate under a set of core values that enable them to define success for themselves in order to achieve their goals for career and/or the college of their choice upon graduation. Curricula is further enriched and differentiated with multiple technology tools. In the 2016-17 school year, our middle school students will have 1:1 laptops and elementary classrooms will be equipped with computer carts and mobile devices. Our classes also have interactive smartboards. Students are taught to communicate effectively, think critically, be resilient, have hope and belief in themselves and be able to meet any opportunity with confidence. With challenging inquiry curricula, effective teaching practices and array of comprehensive student support services in place, we support all students. We focus on being student-centered and data-driven and using research-based/ action-oriented practices to advocate for high standards of excellence.

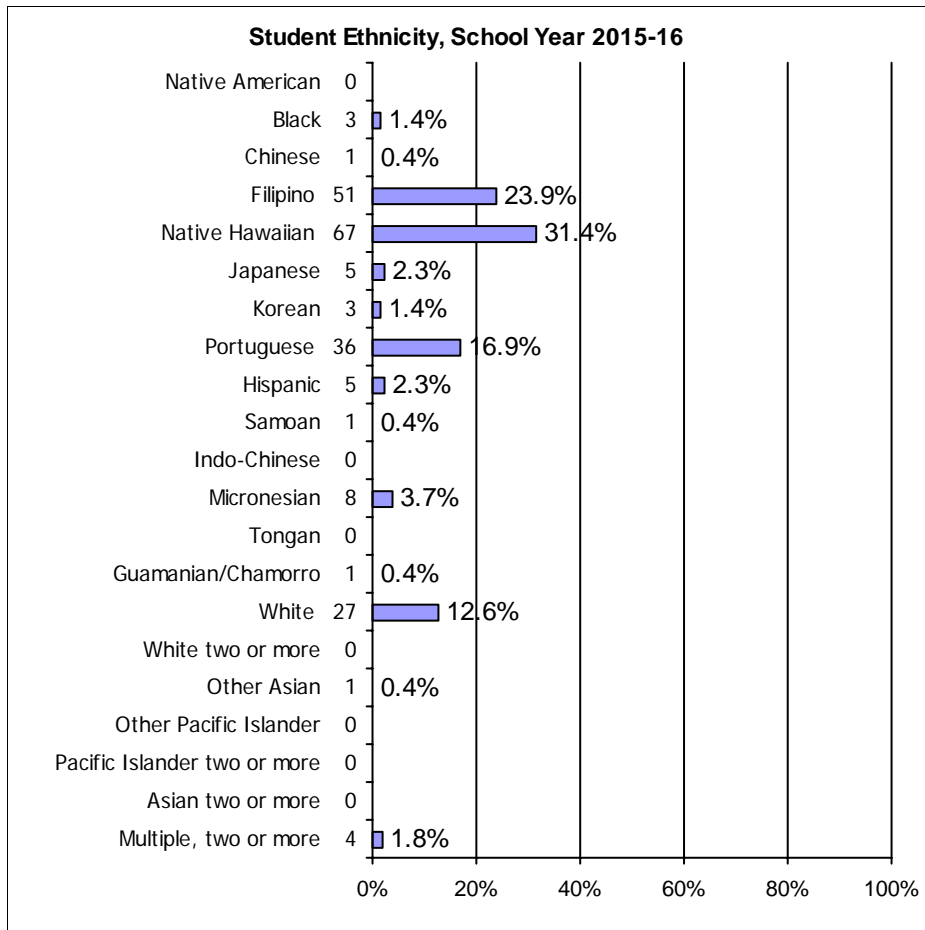
Additional enrichment activities include fieldtrips, cultural performances, school garden, recycling, afterschool programs and track and field. Each fall, Pa'auilo puts on a Blue and White Fair for the community as well as a Winter Program and Spring May Fest. We strive to have each student reach his/her potential intellectually, physically, emotionally and socially. Developing empathetic and respectful students requires collaboration between school and families. Our administration, teachers and staff work collaboratively with parents to create a learning environment where students can thrive.

School Setting

Student Profile

School year	2013-14	2014-15	2015-16		2013-14	2014-15	2015-16
Fall enrollment	243	228	213	Number and percent of students in Special Education programs	15	18	20
					6.1%	7.8%	9.3%
Number and percent of students enrolled for the entire school year	237	211	193	Number and percent of students with limited English proficiency	14	11	13
	97.5%	92.5%	90.6%		5.7%	4.8%	6.1%
Number and percent of students receiving free or reduced-cost lunch	165	159	150	Percent of Kindergartners who attended preschool	--	--	--
	67.9%	69.7%	70.4%				

Note. -- means missing data.
 * means data not reported to maintain student confidentiality (see FERPA).
 ** means School is participating in the Community Eligibility Provision.



n = 213

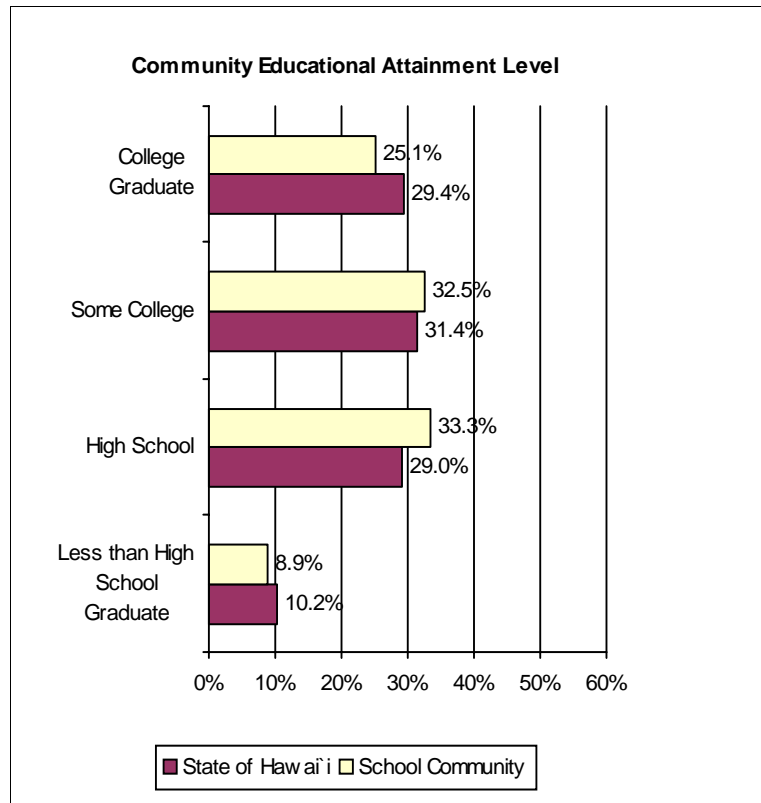
School Setting

Community Profile

The *Community Profile* information updated in this school report reflects selected 2010 demographics for the High School Complex (HSC) area in which this school resides. Profile data are based on the 2010 U.S. Census, the American Community Survey (ACS) 2006-2010 five-year estimates (centric to 2008), and the incorporation of Hawaii’s HSC boundary areas with updated 2010 Census geography. Figures for educational attainment and median household income are sample estimates obtained from the ACS, adapted to conform to HSC geography, and should be considered rough approximations of census counts.

Based on the 2010 U.S. Census

Honokaa HSC Complex	School Community	State of Hawai'i
Total population	17,179	1,360,301
Percentage of population aged 5-19	21.2%	18.4%
Median age of population	39.5	38.6
Number of family households	4,235	313,907
Median household income	\$68,100	\$66,420



School Improvement

Summary of Progress

For School Year (SY) 2015-16, Pa'auilo Elementary and Intermediate School (PEIS) focused primarily on student achievement in Reading and Math. Our goal was to measure and celebrate growth quarterly using our universal screener for Math and Reading in hopes that we would adjust supports for students quarterly to move them toward grade-level proficiency by the end of quarter four. This effort relied heavily on the implementation of a working Response to Intervention (RTI) program schoolwide. The school's leadership team supported RTI and attended formal professional development training in order to evaluate and plan for improved RTI programming in the upcoming 2016-17 school year. Continuous improvement in the area of academic proficiency and RTI programming is an ongoing work in progress.

The school's Instructional Leadership Team (ILT) focused its efforts on improving Writing instruction schoolwide for the SY 2015-16. The focus was selected based on schoolwide scores from SY 2014-15 (SBA and STARR.) The team specifically narrowed in on addressing Academic Language to work on improving writing proficiency in all grade levels and across content areas. In addition, Pa'auilo School continued its efforts on building organizational skills into our curricula with the use of schoolwide planners and binders for all students. Elementary teachers also implemented interactive math notebooks to enhance the note-taking efforts that are continued schoolwide. Moving forward with organization, under the AVID program, the Principal and a team of teachers attended formal training in June of 2016 and Pa'auilo School will implement additional AVID strategies in SY 2016-17 to include WICOR and Socratic Seminar. In the middle school, we have added an AVID elective as well.

Pa'auilo School (elementary) has implemented the Success for All (SFA) program for over thirteen years and regroups students quarterly for a ninety-minute reading block. In 2015-16, the school ran the SFA program in grades K-3 with grade 4 doing a pilot program of SFA with Wonders curriculum and a pilot of Wonders in grade 5. The staff has collaborated and decided that running traditional SFA in grades K and 1 with the SFA structure using the Wonders curriculum (as in the grade 4 pilot) is what will best serve our students going forward. The middle level grades (6-9) have fully implemented the Spring Board curriculum for ELA. For math, Pa'auilo School has fully implemented Stepping Stones Math in the elementary and GO Math in the middle school. Our school has also been awarded a Power Teaching Math (PTM) grant to support math curriculum implementation for the middle school; however, our PTM provider supports all teachers on campus who are interested in implementing PTM.

Professional development for teachers is held to high regard at PEIS. Teachers are given time weekly to work in Professional Learning Communities (PLC) on Data Teams and in 2015-16, elementary teachers were given one full day each month to work on grade-level collaboration and engage in professional development in STEM, AVID, PTM, etc. Moving forward, PEIS will continue to provide weekly time for teachers to have PLCs and work in Data Teams; in addition, one day per quarter has been provided in the schedule for all teachers K-9 to work in PLCs and to engage in professional development.

As we go forward in the upcoming school year, PEIS will continue to focus on student achievement in Reading, Math, as well as Science. The school will also focus on character development with the addition of Advisory in the middle school and a social emotional curriculum in the elementary school. A continued focus will be placed on implementing the Common Core State Standards at every level as well as promoting the GLOs using a more cultural approach. Finally, Pa'auilo School is taking the initiative to enhance the home-school connection using programs like Google classroom, Remind101, and the school Synnervoice messaging service. We will be adding a PCNC position to our budget to work directly on relationships and bridging the home-school connection by engaging our families and community in the high quality learning we believe is happening at Pa'auilo School.

School Resources

Certified Staff

Teaching Staff

Total Full-Time Equivalent (FTE)		15.0
Regular Instruction, FTE	93.3%	14.0
Special Instruction, FTE	6.6%	1.0
Supplemental Instruction, FTE	0.0%	0.0
Teacher headcount		15
Teachers with 5 or more years at this school		2
Teachers' average years of experience		9.2
Teachers with advanced degrees		8

Professional Teacher Credentials

Fully licensed	100.0%	15
Emergency hires	0.0%	0

Students per Teaching Staff *

Regular Instruction	13.7
Special Instruction	20.0

* These figures do not indicate class size.

Administrative and Student Services Staff

Administration, FTE *	3.0
Librarians, FTE	0.0
Counselors, FTE	2.0
Number of principals at this school in the last five years	2

* Administration includes Principals, Vice-Principals, Student Activity Coordinators, Student Services Coordinators, Registrars, and Athletic Directors

Facilities

School Year Ending 2016

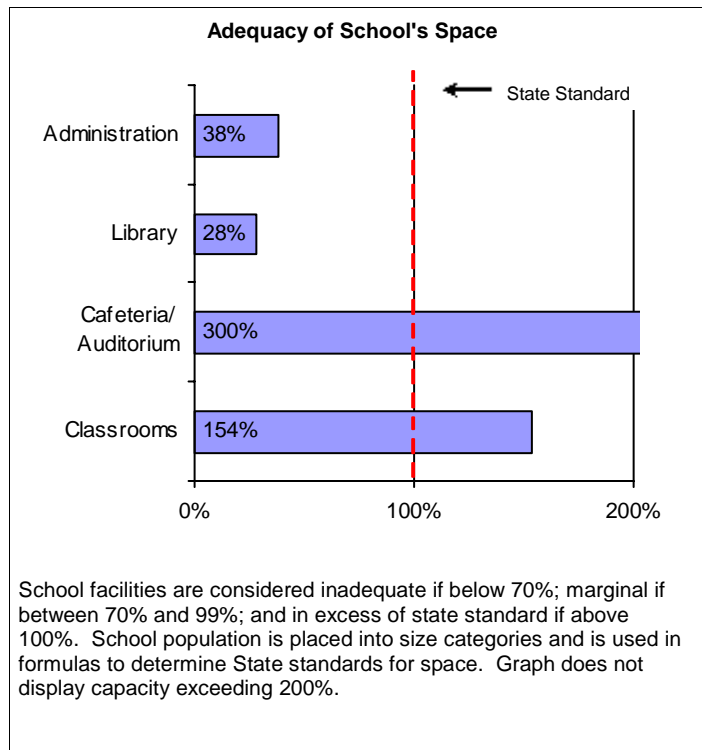
Classrooms available	17
Number of classrooms short (-) or over (+)	0

School facilities inspection results

From the 2011 school year, school facilities inspection data are no longer available at the state level. Department schools are still required to do an annual assessment of its facilities in the following areas: Grounds, Building exterior, Building interior, Equipment/Furnishings, Health/Safety and Sanitation. All department schools should have their annual inspections completed by the second quarter of the school year.

Historically, the majority of the department schools attained inspection assessment points in the following ranges: 9-15, earning a "Satisfactory" rating, and 16-18 points, earning the highest "Very Good" rating.

Note. -- means missing data.



Vital Signs

School Quality Survey

The School Quality Survey (SQS), administered by the Accountability Section, is used for strategic planning and to comply with state accountability requirements.

Percent of Positive Responses

School Quality Survey *		Teachers		Parents		Students	
		School	State	School	State	School	State
Safety	2015	74.3%	67.4%	77.7%	71.8%	72.2%	71.1%
	2016	91.6%	66.5%	73.4%	72.9%	71.6%	70.5%
Well-Being	2015	65.3%	64.0%	82.3%	82.4%	63.8%	68.3%
	2016	81.2%	66.9%	87.1%	85.8%	68.3%	65.5%
Satisfaction	2015	61.5%	54.5%	68.4%	63.7%	66.2%	76.2%
	2016	55.0%	55.7%	68.1%	66.5%	66.0%	70.6%
Involvement/Engagement	2015	78.4%	61.3%	75.3%	71.3%	60.4%	59.3%
	2016	70.0%	62.7%	78.0%	72.7%	69.2%	58.7%

Survey Return Rate **		Teachers		Parents		Students	
		School	State	School	State	School	State
	2015	92.8%	88.7%	21.1%	18.4%	92.6%	87.2%
	2016	26.6%	58.8%	23.9%	22.7%	93.4%	73.3%

* The SQS is completed by students and parents of students in grades 4, 5, 7, 8, 9, and 11 and by all teachers of the school. State Teacher and Parent positive response figures are one of four grade spans (Gr. K to 5/6, Gr. 6/7 to 8, Gr. 9 to 12, and Multi-level) that best correspond to this school's grade span. The Student positive response figures for the State and this school are those of the highest grade level surveyed at this school.

** State Return Rate for Teachers, Parents, and Students are for one of six grade spans (Elementary, Elementary/Middle, Elementary/Middle/High, Middle, Middle/High, High) that corresponds to this school.

Note: In 2015, a revised School Quality Survey (SQS) was administered statewide to students, school staff, and parents. The dimensions, questions, and rating scale differ from the SQS administered in previous years.

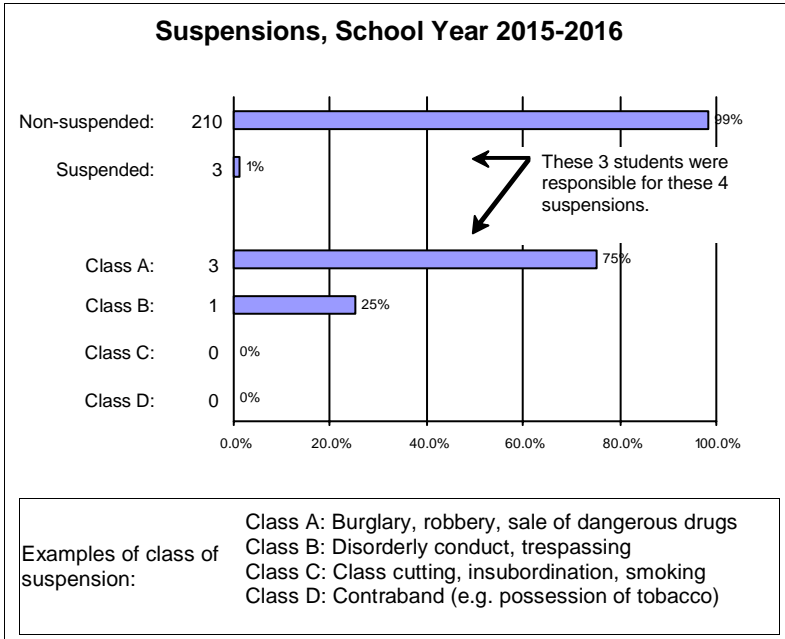
Vital Signs

Student Conduct

Attendance and Absences

School Year			
2013-14	2014-15	2015-16	State Standard
Average Daily Attendance: % (higher is better)			
93.9%	93.8%	93.8%	95.0%
Average Daily Absences: in days (lower is better)			
10.9	11.0	11.0	9

Suspensions, School Year 2015-2016



Examples of class of suspension:

- Class A: Burglary, robbery, sale of dangerous drugs
- Class B: Disorderly conduct, trespassing
- Class C: Class cutting, insubordination, smoking
- Class D: Contraband (e.g. possession of tobacco)

School Retention

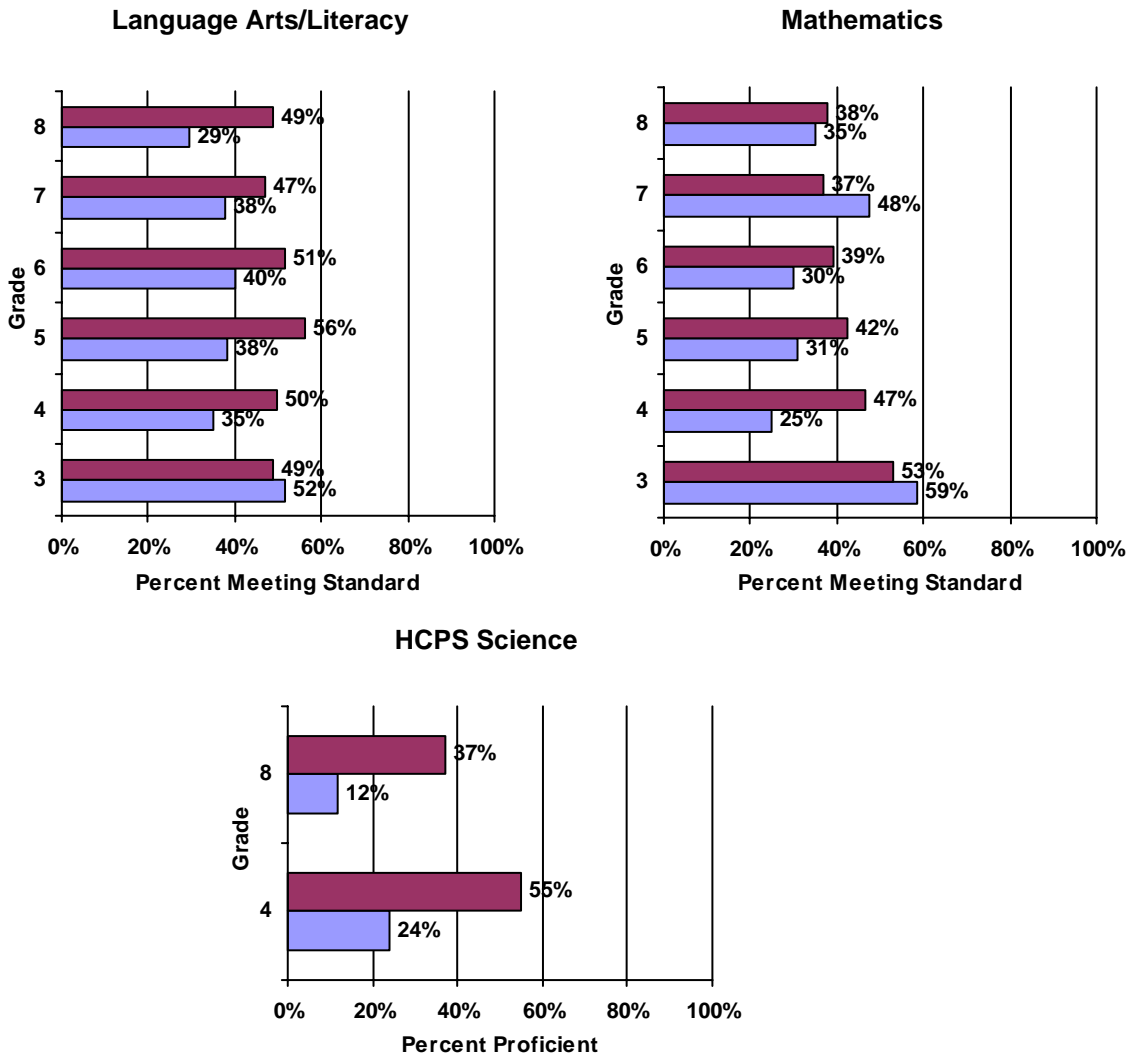
Retention for elementary schools include students who were retained (kept back a grade) in all grades except kindergarten. Retention for middle/intermediate/K-8 schools include only eighth graders who were not promoted to ninth grade.

	Retention		
	2014	2015	2016
Total number of students	26	17	14
Percent retained in grade	0%	0%	0%

Note. -- means missing data.
 * means data not reported to maintain student confidentiality (see FERPA).

Vital Signs

Hawaii Statewide Assessment Program



The HCPS Science assessment is given in grades 4 and 8. High School (HS) HCPS Science assessment results are from an end-of-course exam given to high school students enrolled in Biology I.



A school's bar may not be shown to maintain student confidentiality (see FERPA).

Other School Information

Paauilo Elementary & Intermediate School was accredited by the Western Association of Schools and Colleges for a period of six years with a two-day mid-cycle visit. This school's accreditation status expires in 2022.

Published on November 2, 2016.

Accountability Section, Assessment and Accountability Branch, Office of Strategy, Innovation and Performance, Honolulu, HI: Hawaii State Department of Education.